



# Sodalite

**SOFTWARE DEFINED APPLICATION  
INFRASTRUCTURES MANAGEMENT  
AND ENGINEERING**



## SmartIDE

*Modelling & IDE  
SODALITE Stack 1*

[www.sodalite.eu](http://www.sodalite.eu)

This project has received funding from the European Union's Horizon 2020 research and innovation programme under grant agreement No 825480



# SODALITE SmartIDE is solving



## The Problem

Complex deployment model on heterogeneous infrastructures (too many considerations to be taken into account) without further assistance based on previous experiences



## The Solution

DSL editor to develop a complex application deployment model, Reasoner to provide recommendations/validations, TOSCA application deployment model



## The Value

Intelligence integrated process to develop complex deployment schemas taking into account different considerations such as performance and security



A person in a suit stands in silhouette, looking at a large digital display filled with various data visualizations like bar charts, pie charts, and graphs. The background is a bright, futuristic interface with glowing blue and white elements. The person is holding a briefcase. The overall scene suggests a high-tech business or data analysis environment.

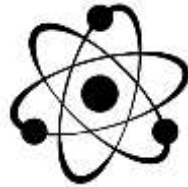
**An IDE that requires the least information from the experts by getting suggestions and validation from the Knowledge Base**

# SODALITE SmartIDE Benefits



## Smart

It requires the least information from the experts by getting suggestions and validation from the Knowledge Base



## Comprehensive

Based on a wide range of knowledge-base semantic reasoning-driven results



## Configurable

The corresponding Experts can author AADMs, RMs, by getting validation and intelligent recommendations during design time



## Meaningful

Provides inferred knowledge for application modelling possibilities, performance models, security policy, deployment policies, monitoring and refactoring

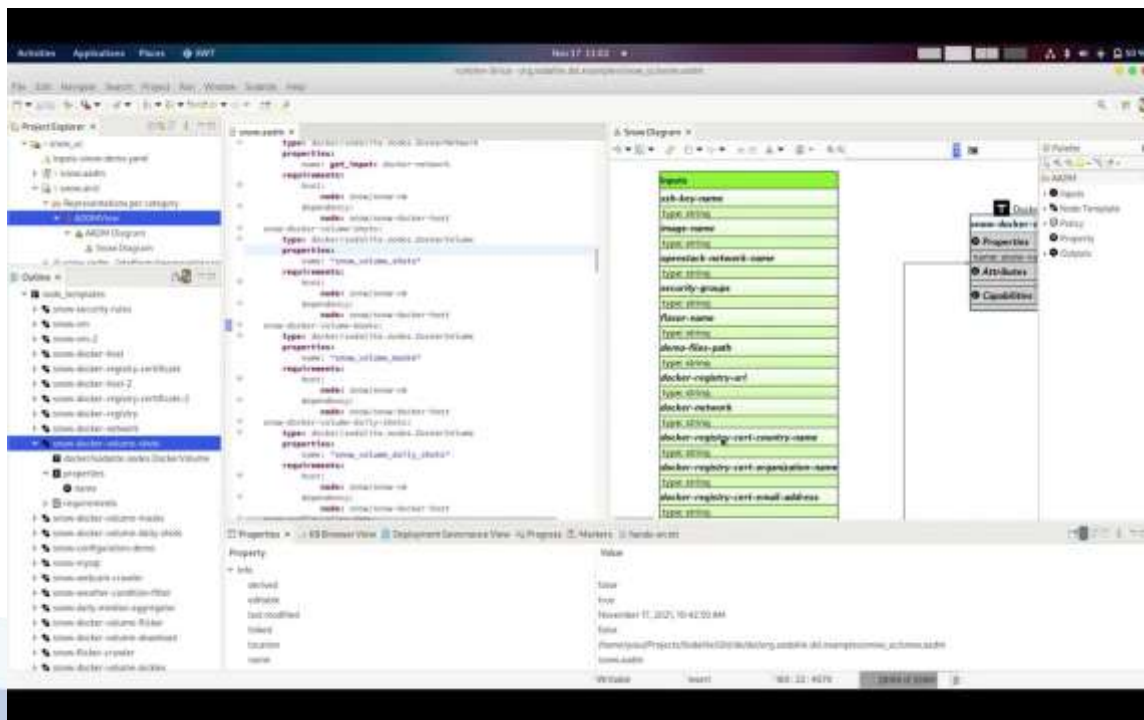


# SmartIDE Demonstration



LIVE

See Full Demo at  
@SODALITE\_H2020

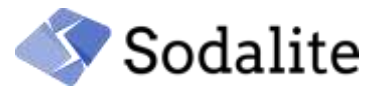


@SODALITESW

SODALITE-EU



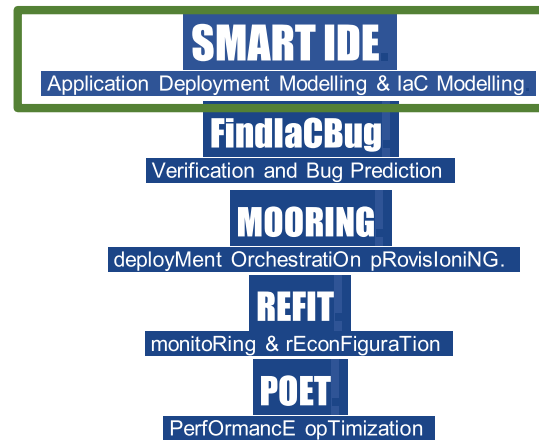
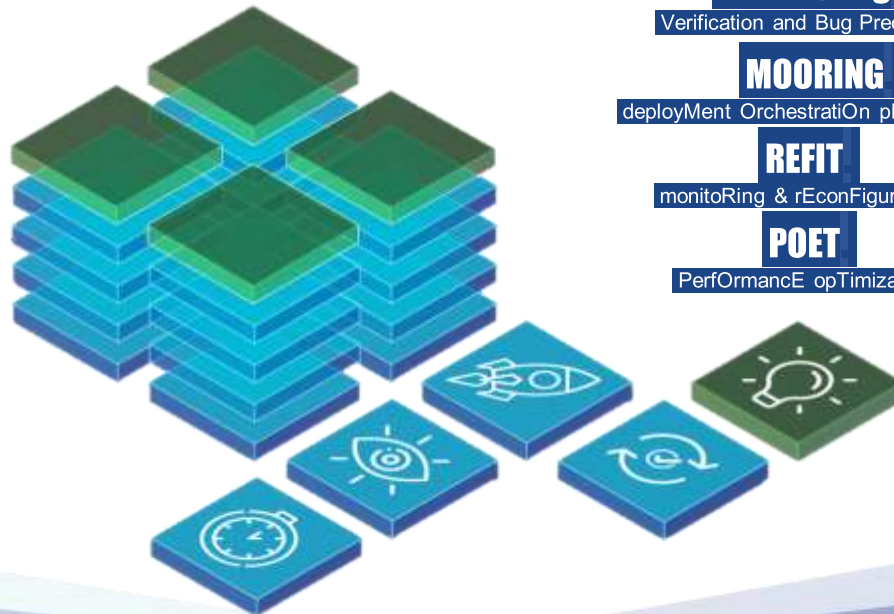
# Context on SODALITE solution



## Innovation

- ★ SODALITE IDE
- ★ Knowledge Graphs and Semantic Reasoning
- ★ Platform Discovery Service
- ★ IaC Blueprint Builder

*IDE AND REASONER API  
BASED ON SOPHISTICATED  
KNOWLEDGE GRAPHS AND  
SEMANTIC REASONING*



# SODALITE Business Plan



	Trial	Basic	High-End
	Testbed Access	Light SODALITE	Advanced SODALITE
	FREE	€	€€
Optimisation & Reconfiguration	✓	✓	✓
Own Infrastructure Access	X	✓	✓
Configuration	✓	✓	✓
Maintenance	X	€	✓
Support & Training	X	€	✓
Customisation	X	€	✓
	Premium Services €		



# SmartIDE Early Adopters



## Environmental

**Problem:** Complexity of the pipeline deployment into on-premise data centers or external cloud; inexperience of PA domain experts in DevOps practices and data management.

**Solution:** Abstract modeling hides the underlying technical complexity and code generation simplifies the creation of deployment artifacts and supports high level pipeline design and one-click activation.



## Digital Health

**Problem:** Complexity in the clinical case deployment into various infrastructures, on-prem data centers or even public or private cloud; inexperience of medical domain experts and DevOps practices.

**Solution:** A tool or a service that greatly simplifies the process of development of deployment code, such that the use case workflow will be efficiently executed on selected resources.



## IoT Automotive

**Problem:** Application developers targeting multiple vehicles with different hardware configurations, heterogeneous computing resources.

**Solution:** Vehicle-agnostic application deployment modelling via a targeted application developer dashboard, using information from the platform discovery service and semantic knowledge graphs to dynamically derive Kubernetes deployment manifests.





# The SODALITE Team



*SODALITE has the potential to deliver solid innovations, validated in large pilots, towards the deployment and operation of the next generation of applications that will run on heterogeneous HPC and Cloud resources.*

*Nicolas Ferry*



*The SODALITE outcomes are an impressive next step to facilitate efficiently deploying and operating complex, adaptive software across the whole compute continuum.*

*Andreas Metzger*

UNIVERSITÄT  
DUISBURG  
ESSEN



@SODALITESW

SODALITE-EU





*Shaping the Infrastructure Management and  
Application Deployment of Tomorrow!*

## TALK TO US

**Daniel Vladušič**

Project Coordinator

[daniel.vladusic@xlab.si](mailto:daniel.vladusic@xlab.si)

**Elisabetta Di Nitto**

Technical Coordinator

[elisabetta.dinitto@polimi.it](mailto:elisabetta.dinitto@polimi.it)

**Paul Mundt**

Innovation Manager

[paul.mundt@adaptant.io](mailto:paul.mundt@adaptant.io)

**Ana Maria Morales**

Communication Manager

[ana.morales@atos.net](mailto:ana.morales@atos.net)

[info@sodalite.eu](mailto:info@sodalite.eu)



[@SODALITESW](https://twitter.com/SODALITESW)



[SODALITE.EU](https://www.sodalite.eu)



[SODALITE H2020](#)



[SODALITE-EU](#)



[sodaliteh2020](#)



[SODALITE](#)



This project has received funding from the European Union's Horizon 2020 research and innovation programme under grant agreement No 825480

[www.sodalite.eu](https://www.sodalite.eu)



# Sodalite



This project has received funding from the European Union's Horizon 2020 research and innovation programme under grant agreement No 825480.